



Emmanuel Church

EASTBOURNE

A new church and community space for all ages



A legacy of faith and service...

For well over a century, four Eastbourne churches have occupied a significant place in the history of Eastbourne; Central Methodist, St Andrew's and Upperton URC and Greenfield Methodist Churches.

Few will be unaware of the service these churches have provided over the years in weddings, funerals, church parades, civic events, nursery care, concerts as well as services of worship for all ages. Many visitors to the town have shared in those activities over the years.

However, the impact of age on these once fine buildings has created a situation where the congregations are not able to meet the considerable cost of repair and restoration, and the shape of the buildings has become unfit for present day use. After some years of careful planning, we believe that we now have a plan worthy of taking our churches forward.

The plan

The plan involves the bringing together of four churches into one new congregation: Emmanuel Church, Eastbourne. This new Local Ecumenical Partnership came into being in January 2018 and a new building is planned – one that will be suitable long into the future.

The new building will be a modern and flexible space, suitable for both worship and community use, and will enable the church to fulfil its mission long into the 21st century.

New premises mean new opportunities to serve the local community. Our facilities will include a modern, welcoming café for the local community; the provision of showers and space so that the church can support the night shelter in town, and rooms for community groups to use.

The new building will largely be paid for by the sale of the previous church sites -



their development will provide a number of residential units for the town - and our lively new congregation will be putting in a major effort to raise a funding shortfall estimated to be around £475,000. This ambitious sum is to be achieved through a variety of local fund-raising initiatives - direct giving by the members, fund-raising events, financial support from both the Methodist and United Reformed Churches and applications to various grant-making bodies. We have already raised a substantial sum by direct giving, local fund-raising initiatives and the sale of church assets. We are also issuing an appeal for help from the people of Eastbourne.

Our aim is to ensure that the new building will be completed and will have all that it needs for the future. Together, we can share the vision of making Emmanuel Church a reality that will serve the people of Eastbourne for generations to come.

A word from our patrons

Mr Peter Field, HM Lord-Lieutenant of East Sussex



I am pleased to give my full support to this imaginative and forward looking project which will, I am sure, provide great benefit to our community and a secure future for four

of our prominent Eastbourne churches.

Over recent years, members of these churches have made great efforts to preserve the buildings they inherited from a previous generation, but costs of repair and of meeting the requirements of new legislation have proved beyond their ability to cope.

The joining of the four congregations into the new Emmanuel has already given a burst of new life and the promise of a viable and fulfilling future, and members of the new church are looking forward to moving into their new home on Upperton Road. They have already raised a sizeable sum towards their ambitious target for the new church and centre for community work, I ask you to give them your support in this important project.

Rev the Lord Griffiths of Burry Port, Past President of The Methodist Conference



I and my family have warm and vivid memories of Eastbourne, so we take personal pleasure from the way the Free Churches here are seeking to continue and develop what has always been

a vibrant contribution to the life of their community. So the work and witness, the mission and the message of the Christian faith will remain active and alive well into the twenty-first century.

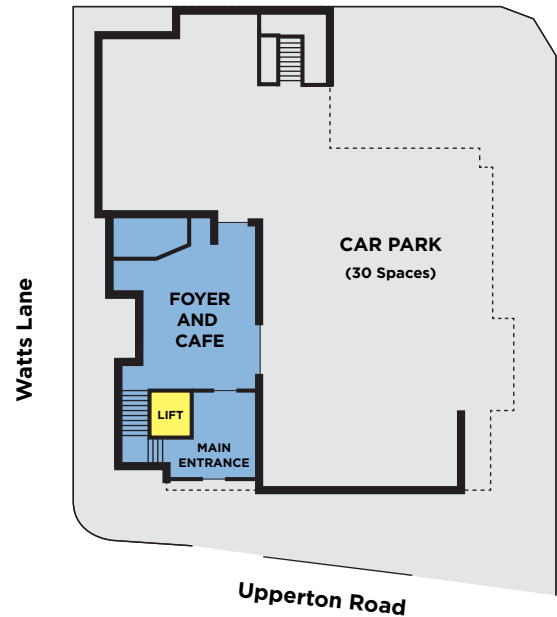
The church will open its doors to the community and reach out to areas of need through its work with young people and its cultural and sporting activities. It will offer shelter and security to families and the elderly and serve their needs. In a word, it will live up to its title: 'Emmanuel, God with us'. I shall certainly maintain a personal interest in this ground-breaking and inspiring initiative. God bless you all.

The building

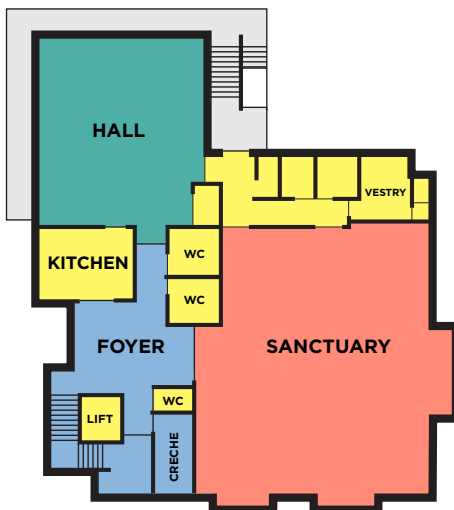
The new Emmanuel Church building has been designed to include a sanctuary, a galleried space capable of seating 250 people.

It also contains a large hall for social activities, café, meeting rooms and office space, and parking for more than thirty vehicles. It will provide a community facility for a wide variety of groups, including our own Jenny Wren Nursery (rated Outstanding by OFSTED) and Little Wrens toddler group, and fellowship for everyone. The premises will be energy efficient and have excellent access throughout, as befits a modern church and community space.

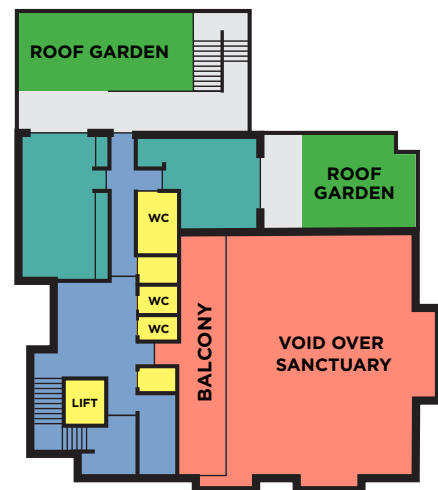
Ground Floor



First Floor



Second Floor



Raising the money

We need to raise a large sum of money and will only achieve this with the help of our local community, business and community organisations.

100%

90%

80%

70%

60%

50%

40%

30%

20%

10%

0%

If you can give financially, you may consider:

- making a Gift Aid donation
- granting an interest-free loan
- bequeathing a legacy

You may wish to organise a local event, such as:

- a sponsored walk, cycle ride or treasure hunt
- organise a Quiz Night or Coffee Morning
- raise funds to pay for the employment of a youth and community worker.

You may wish to raise or give money for a specific item

- Lighting and Sound Systems
- Music - Organ and instruments
- Furnishing for halls
- Equipment for Nursery School
- Toddlers group equipment
- Sanctuary furnishing and fittings
- Cross and artwork
- Kitchen equipment
- Kitchen appliances
- Café equipment
- Foyer
- Toilets - disabled and children's facilities
- Shower Room and facilities
- Roof Garden furniture
- Plants and garden needs
- Lift
- to redesign and install stained glass.



A Church
for all ages



Emmanuel Church Building Appeal

How you can donate

By Cheque

Payable to 'Emmanuel Church, Eastbourne'
and sent to The Treasurer, Emmanuel
Church, Greenfield Road,
Eastbourne BN21 1JJ

Bank transfer

Sort code: 40 52 40
Account number: 00031723

Online

Visit the Emmanuel website for details of
giving via justgiving.com

Contact us

Methodist Minister

Rev Paul Tabraham
Tel: +44 1323 502003

United Reformed Church Minister

Rev David Yule
Email: davidyule0@btinternet.com

Appeal Coordinator

Peter Plowman
Tel: +447821491647

Treasurer

Dr Alan Reid
E Mail: treasurer@emmanueleastbourne.org.uk

www.emmanueleastbourne.org.uk

The production of this brochure has been made possible by the generosity of our sponsors:



CIPIL Chartered Architects

Clare P. Jones Limited
Chartered Architects, Property
Consultants & Designers



Emmanuel Church Eastbourne is a Registered Charity N° 1177439